



POWER TO  
THE PORTABLE

**PORTAPOWER**

---

[www.portapower.com](http://www.portapower.com)





PortaPower was founded in Hong Kong in 1995 with a mission of manufacturing and marketing high quality rechargeable batteries and related products for customers worldwide. With branches established in China and Germany, we are able to integrate R&D design, sales and services to satisfy both diverse and specific consumer needs globally. Given our highly efficient production and assembly lines and experienced R&D team, PortaPower continues to stay in the forefront of rechargeable battery technology, while constantly advancing our engineering and manufacturing capabilities to open new frontiers in the energy field.



**P03**  
Cordless Power Tool  
Battery Packs



**P11**  
Household Items & Gargen Tool  
Battery Packs



**P13**  
Cordless Power Tool Chargers



**P14**  
Battery Cells



**P19**  
E-Bike Wheelchair  
Battery Packs & Chargers



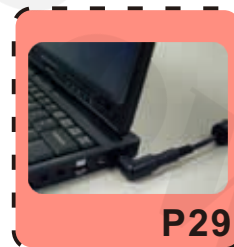
**P34**  
External Batteries



**P33**  
LED- Flashlight  
Battery Packs & Chargers



**P30**  
Digital Camera & Video Camcorder  
Battery Packs & Chargers



**P29**  
Universal Laptop AC &  
Type C Adapters



**P27**  
Diversified Laptop Computer  
Batteries

# CONTENTS

## CORDLESS POWER TOOLS BATTERY PACKS

We provide compatible power tool battery packs for a wide range of brands available in the market, such as Makita, Milwaukee, Worx, DeWalt, Bosch, Ryobi, Paslode, Panasonic, Hitachi, AEG, Black & Decker, Craftsman, Firestorm, Festool, and National & Skil, etc.

### AEG



Voltage: 12V  
Capacity: 1400~2000mAh



Voltage: 18V  
Capacity: 2800~4000mAh



Voltage: 2.4V  
Capacity: 1300~3300mAh



Voltage: 12V  
Capacity: 1300~3300mAh



Voltage: 14.4V  
Capacity: 1700~2500mAh



Voltage: 18V  
Capacity: 1300~3300mAh

### HILTI



Voltage: 14.4V  
Capacity: 3000~4000mAh



Voltage: 14.4V  
Capacity: 3000~4000mAh



Voltage: 21.6V  
Capacity: 3000~4000mAh



Voltage: 36V  
Capacity: 4500~6000mAh



Voltage: 24V  
Capacity: 1900~2500mAh

\*All brands, trademarks and registered trademarks are the property of their respective holders.

\*\* Yellow: NI-MH type batteries    Green: Li-ion type batteries

*PortaPower design features:*

- \* Designed with cell voltage monitoring mechanism.*
- \* Built-in protection IC and NTC to stop battery from being over-charged.*
- \* Explosion avoided.*

**HITACHI**



Voltage: 36V  
Capacity: 2700~4000mAh



Voltage: 25.2V  
Capacity: 3000~3900mAh



Voltage: 18V  
Capacity: 3000~4000mAh



Voltage: 18V  
Capacity: 3000~4000mAh



Voltage: 14.4V  
Capacity: 1500~2000mAh



Voltage: 24V  
Capacity: 1300~3300mAh



Voltage: 18V  
Capacity: 1300~3000mAh



Voltage: 14.4V  
Capacity: 1500~2400mAh



Voltage: 12V  
Capacity: 1200~2000mAh



Voltage: 9.6V  
Capacity: 1200~2000mAh

\*All brands, trademarks and registered trademarks are the property of their respective holders.

\*\* Yellow: NI-MH type batteries    Green: Li-ion type batteries

**Makita**

Voltage: 36V  
Capacity: 2600~3000mAh



Voltage: 18V  
Capacity: 3000~4000mAh



Voltage: 14.4V  
Capacity: 3000~4000mAh



Voltage: 14.4V  
Capacity: 1100~2100mAh



Voltage: 10.8V  
Capacity: 1500~2000mAh



Voltage: 7.2V  
Capacity: 1100~2100mAh



Voltage: 24V  
Capacity: 3200~3300mAh



Voltage: 14.4V  
Capacity: 3200~3300mAh



Voltage: 12V  
Capacity: 3200~3300mAh



Voltage: 4.8V  
Capacity: 1300~2500mAh

\*All brands, trademarks and registered trademarks are the property of their respective holders.

\*\* Yellow: NI-MH type batteries    Green: Li-ion type batteries



Voltage: 40V  
Capacity: 1500~2000mAh



Voltage: 20V  
Capacity: 1400~2000mAh



Voltage: 18V  
Capacity: 1500~2000mAh



Voltage: 14.4V  
Capacity: 1100~2100mAh



Voltage: 12V  
Capacity: 1400~2000mAh



Voltage: 24V  
Capacity: 1300~3300mAh



Voltage: 18V  
Capacity: 1300~3300mAh



Voltage: 14.4V  
Capacity: 1200~2000mAh



Voltage: 12V  
Capacity: 1200~2000mAh



Voltage: 9.6V  
Capacity: 1200~2000mAh

\*All brands, trademarks and registered trademarks are the property of their respective holders.

\*\* Yellow: NI-MH type batteries    Green: Li-ion type batteries

**RYOBI**

Voltage: 18V  
Capacity: 1100~2100mAh



Voltage: 18V  
Capacity: 4000mAh



Voltage: 14.4V  
Capacity: 1500~2000mAh



Voltage: 14.4V  
Capacity: 1500~2000mAh



Voltage: 12V  
Capacity: 1500~2000mAh



Voltage: 10.8V  
Capacity: 1500~2000mAh

**WORX**

Voltage: 40V  
Capacity: 3000~4000mAh



Voltage: 18V  
Capacity: 1500~2000mAh



Voltage: 18V  
Capacity: 3000~4000mAh



Voltage: 12V  
Capacity: 1500~2000mAh

\*All brands, trademarks and registered trademarks are the property of their respective holders.

\*\* Yellow: NI-MH type batteries    Green: Li-ion type batteries





Voltage: 28V  
Capacity: 3000~4000mAh



Voltage: 18V  
Capacity: 3000~4000mAh



Voltage: 18V  
Capacity: 3000~4000mAh



Voltage: 12V  
Capacity: 1400~2000mAh



Voltage: 14.4V  
Capacity: 1500~2400mAh



Voltage: 12V  
Capacity: 1300~3300mAh



Voltage: 12V  
Capacity: 1200~2000mAh



Voltage: 9.6V  
Capacity: 1300~3300mAh



Voltage: 2.4V  
Capacity: 1500~2000mAh

\*All brands, trademarks and registered trademarks are the property of their respective holders.

\*\* Yellow: NI-MH type batteries Green: Li-ion type batteries



Voltage: 18V  
Capacity: 3000~4000mAh



Voltage: 14.4V  
Capacity: 3000~4000mAh



Voltage: 12V  
Capacity: 1500~2000mAh



Voltage: 24V  
Capacity: 1300~3300mAh



Voltage: 18V  
Capacity: 1300~3300mAh



Voltage: 14.4V  
Capacity: 1300~3300mAh



Voltage: 12V  
Capacity: 1300~3300mAh



Voltage: 9.6V  
Capacity: 1300~3300mAh



Voltage: 7.2V  
Capacity: 1500~3300mAh

\*All brands, trademarks and registered trademarks are the property of their respective holders.

\*\* Yellow: NI-MH type batteries    Green: Li-ion type batteries

# CRAFTSMAN



Voltage: 20V  
Capacity: 2800~4000mAh



Voltage: 19.2V  
Capacity: 3000~4000mAh



Voltage: 18V  
Capacity: 1300~3300mAh



Voltage: 18V  
Capacity: 1300~3300mAh



Voltage: 14.4V  
Capacity: 1300~3300mAh



Voltage: 12V  
Capacity: 1300~3300mAh



Voltage: 12V  
Capacity: 1300~3300mAh



Voltage: 9.6V  
Capacity: 1300~3300mAh



Voltage: 7.2V  
Capacity: 1300~3300mAh

\*All brands, trademarks and registered trademarks are the property of their respective holders.

\*\* Yellow: NI-MH type batteries    Green: Li-ion type batteries

## HOUSEHOLD ITEMS & GARGEN TOOL BATTERY PACKS

**dyson**



Fit model: Dyson DC16  
Voltage: 21.6V  
Capacity: 2000mAh



Fit model: Dyson V6  
Voltage: 21.6V  
Capacity: 3300mAh



Fit model: Dyson V7  
Voltage: 21.6V  
Capacity: 2500mAh



Fit model: Dyson V8  
Voltage: 21.6V  
Capacity: 4000mAh



Fit model: Dyson V8  
Voltage: 21.6V  
Capacity: 5000mAh



Fit model: Dyson V10  
Voltage: 25.2V  
Capacity: 3000mAh

**iRobot**



Fit model: Roomba 440  
Voltage: 14.4V  
Capacity: 3300mAh

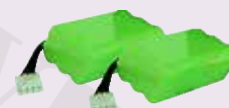


Fit model: Roomba 500 / 600 / 700  
Voltage: 14.4V  
Capacity: 3300mAh

**neato**  
robotics®



Fit model: XV15  
Voltage: 21.6V  
Capacity: 3300mAh



Fit model: 80  
Voltage: 7.2V  
Capacity: 3000mAh

\*All brands, trademarks and registered trademarks are the property of their respective holders.

*More capacity Selections available*

indream®



Fit model: Indream 9700 / 9300 / 9200  
Voltage: 14.4V  
Capacity: 3300mAh

greenworks®



Fit model: G40LM35K40v Cordless  
Voltage: 36V  
Capacity: 2500mAh



Fit model: G40LM35K40v Cordless  
Voltage: 36V  
Capacity: 5000mAh

GARDENA®



Fit model: 9825 / ComfortCut Li-18 / 23R  
Voltage: 18V  
Capacity: 2500mAh



Input: 100 - 240V, 50 - 60Hz  
Output: 26.1V, 780mA



Input: 100 - 240V, 50 - 60Hz  
Output: 22V, 500mA



Input: 100 - 240V, 50 - 60Hz  
Output: 24.4V / 16.8V, 348mA

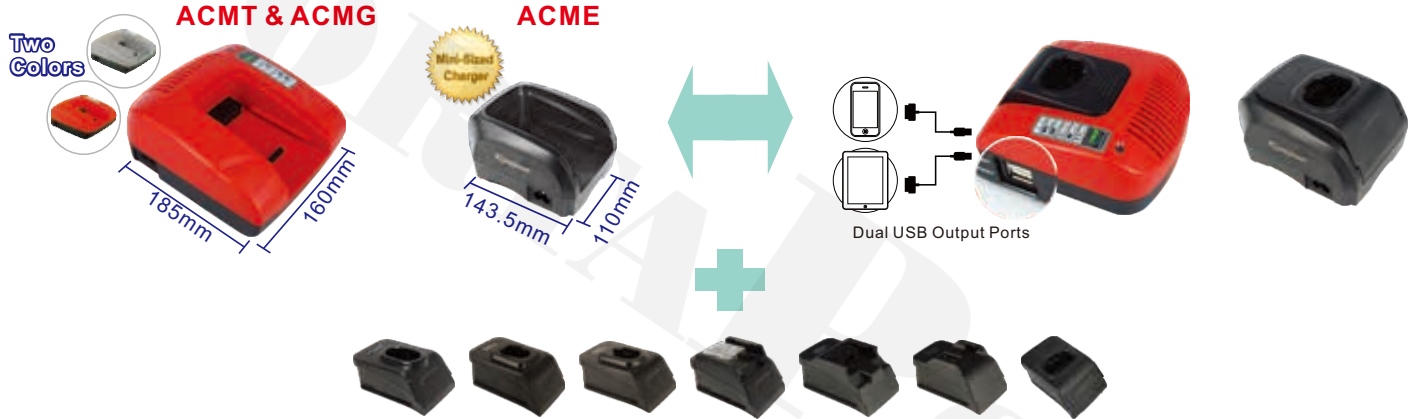


Input: 100 - 240V, 50 - 60Hz  
Output: 30.5V, 1100mA

\*All brands, trademarks and registered trademarks are the property of their respective holders.

## CORDLESS POWER TOOL CHARGERS

Fit for both Ni-Cd / Ni-MH & Li-ion Power Tool Batteries



**We provide a broad range of interchangeable charger plates  
Over 95% power tool battery charger plates available**

### Specifications :

Model	ACMT	ACMG	ACME
Input	100-240V / 1.2A Max.		
Output	7.2V - 25V / 3A Max.	21.6V - 36V / 2.1A Max.	7.2V - 18V / 1.5A Max.

- \* Fit for Ni-Cd/Ni-MH & Li-ion Power Tool Batteries
- \* Interchangeable plates to suit different battery models, simply change the charger plates
- \* Cover 90% Power Tool battery models

## BATTERY CELLS

YLK LIK ENERGY (YLE) - a subsidiary of PortaPower Group



Model: INR18350D82 DT

Chemistry: Li-NMC

Nominal Voltage: 3.6V

Typical Capacity: 820 mAh

Continuous Current: 8A



Model: INR18650D150 GT

Chemistry: Li-NMC

Nominal Voltage: 3.6V

Typical Capacity: 1500 mAh

Continuous Current: 20A



Model: INR18650D250 D

Chemistry: Li-NMC

Nominal Voltage: 3.6V

Typical Capacity: 2500 mAh

Continuous Current: 10A



Model: NCR18500A204 A

Chemistry: Li-NCA

Nominal Voltage: 3.6V

Typical Capacity: 2040 mAh

Continuous Current: 4A



Model: INR18650D200 GT

Chemistry: Li-NMC

Nominal Voltage: 3.6V

Typical Capacity: 2000 mAh

Continuous Current: 20A



Model: INR18650A260 A

Chemistry: Li-NMC

Nominal Voltage: 3.6V

Typical Capacity: 2600 mAh

Continuous Current: 5A

***YLE manufactures high quality Li-NMC cells which can be used in the making of battery packs for eBikes, LED Lightings, Household Appliances and many other devices.***

### Battery cells of different capacity available



Model: INR18650D260 D  
Chemistry: Li-NMC  
Nominal Voltage: 3.6V  
Typical Capacity: 2600 mAh  
Continuous Current: 10A



Model: NCR18650A300 A  
Chemistry: Li-NCA  
Nominal Voltage: 3.6V  
Typical Capacity: 3000 mAh  
Continuous Current: 6A



Model: NCR18650D290 D  
Chemistry: Li-NCA  
Nominal Voltage: 3.6V  
Typical Capacity: 2900 mAh  
Continuous Current: 10A



Model: NCR18650A335 A  
Chemistry: Li-NCA  
Nominal Voltage: 3.6V  
Typical Capacity: 3350 mAh  
Continuous Current: 6A



Model: NCR18650D320 D  
Chemistry: Li-NCA  
Nominal Voltage: 3.6V  
Typical Capacity: 3200 mAh  
Continuous Current: 10A



Model: NCR18650D350 D  
Chemistry: Li-NCA  
Nominal Voltage: 3.6V  
Typical Capacity: 3450 mAh  
Continuous Current: 10A





Model: NCR14250A52 A  
Chemistry: Li-NCA  
Nominal Voltage: 3.6V  
Typical Capacity: 520mAh  
Continuous Current: 1A



Model: INR14500A95 A  
Chemistry: Li-NMC  
Nominal Voltage: 3.6V  
Typical Capacity: 950mAh  
Continuous Current: 2A



Model: INR16340A82 AJ  
Chemistry: Li-NMC  
Nominal Voltage: 3.6V  
Typical Capacity: 820mAh  
Continuous Current: 2A



Model: NCR14430A92 A  
Chemistry: Li-NMC  
Nominal Voltage: 3.6V  
Typical Capacity: 800mAh  
Continuous Current: 2A



Model: INR16300D65 A  
Chemistry: Li-NMC  
Nominal Voltage: 3.6V  
Typical Capacity: 650mAh  
Continuous Current: 5A



Model: INR26650A500  
Chemistry: Li-NMC  
Nominal Voltage: 3.6V  
Typical Capacity: 5000mAh  
Continuous Current: 10A

## JAPAN and KOREA Cells

*We are the Authorized Assembler of Samsung high power consumption battery packs.*



Model: ICR18650-26J M  
Chemistry: Li-ion  
Nominal Voltage: 3.6V  
Typical Capacity: 2600mAh  
Continuous Current: 5.2A



Model: INR18650-35E  
Chemistry: Li-ion  
Nominal Voltage: 3.6V  
Typical Capacity: 3350mAh  
Continuous Current: 8A



Model: INR21700-50E  
Chemistry: Li-ion  
Nominal Voltage: 3.6V  
Typical Capacity: 4900mAh  
Continuous Current: 9.8A



Model: INR18650-30Q  
Chemistry: Li-ion  
Nominal Voltage: 3.6V  
Typical Capacity: 3000mAh  
Continuous Current: 6A



Model: INR18650-29E  
Chemistry: Li-ion  
Nominal Voltage: 3.6V  
Typical Capacity: 2850mAh  
Continuous Current: 8.25A

*We are the Authorized Assembler of Panasonic high power consumption battery packs.*



Model: UR18650AA  
Chemistry: Li-ion  
Nominal Voltage: 3.6V  
Typical Capacity: 2250mAh  
Continuous Current: 5A



Model: NCR18650PF  
Chemistry: Li-NCA  
Nominal Voltage: 3.6V  
Typical Capacity: 2900mAh  
Continuous Current: 10A



Model: NCR18650B  
Chemistry: Li-NCA  
Nominal Voltage: 3.6V  
Typical Capacity: 3350mAh  
Continuous Current: 5A



Model: NCR18650GA  
Chemistry: Li-NCA  
Nominal Voltage: 3.6V  
Typical Capacity: 3450mAh  
Continuous Current: 10A



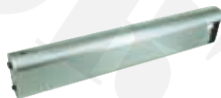
Model: NCR18650BD  
Chemistry: Li-NCA  
Nominal Voltage: 3.6V  
Typical Capacity: 3180mAh  
Continuous Current: 10A

## E-BIKE WHEELCHAIR BATTERY PACKS & CHARGERS

### In-frame



Phoenix I YL-TPH1



Phoenix II YL-TPH2



Black Warrior I YL-TBW1



Black Warrior II YL-TBW2



Sword YL-TSW0



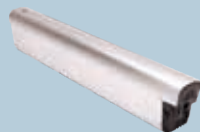
Dorado-Max RE-TDM0



Suoni I SS-TSU1



Lushan I SS-TLS1



Unicorn I YL-TUN1



Unicorn II YL-TUN2



Unicorn III YL-TUN3



Unicorn IV YL-TUN4



White Tiger YL-TWT0

*\*Our e-bike battery packs are in compliance with EN15194 & EN ISO 13849-1*

### **In-frame**



Flying Fish YL-TFF0



Rapier RE-TRA0



Scimitar RE-TSC0



Eel-Pro RE-TEP0



Eel-Mini RE-TEM0



South Pacific I SS-TSP1



South Pacific II SS-TSP2



South Pacific III SS-TPS3



South Pacific IV SS-TPS4



Razer YL-TRA0



Dragon I YL-TDR1



Dragon II YL-TDR2



Dragon III YL-TDR3



## Down Tube



Wasp I YL-DWA1



Wasp II YL-DWA2



Hailong I SS-DHL1



Hailong I-2 SS-DHL2



Tiger Shark I RE-DTS1



Tiger Shark III RE-DTS3



Tiger Shark II RE-DTS2



## Rear Carrier



Thunderstorm YL-CTS0



Lightning YL-CLN0



Blizzard YL-CBL0



Blue Sky YL-CBS1



Haitun I SS-CHT1



Breeze II YL-CBR2



Jilong I SS-CJL1



Matsushita II YL-CMS2



Shooting Star YL-CSS0



Tianlong III SS-CTL3



White Cloud II YL-CWC2



## Multi-fit



Seahorse YL-MSH0



Starfish YL-MSF0



Coral YL-MCR0



Jellyfish YL-MJF0

Welding



Clipping



with Controller Box Base



Blue Whale YL-MBW0



Fangbao YL-MFB0



## Seat Post



Armour II YL-SAR2



Sakura II WY-SSA2



Whitebait I YL-SWB1



Whitebait III YL-SWB3



Whitebait IV YL-SWB4



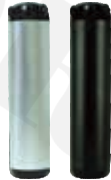
Ant YL-SAN0



## Water Bottle



Dragonfly I YL-WDF1



Dragonfly II YL-WDF2



Dragonfly III YL-WDF3



Sky Bull I YL-WSB1



Sky Bull II YL-WSB2



Scarab I YL-WSC1



Scarab II YL-WSC2



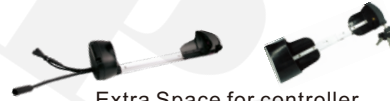
Scarab III YL-WSC3



Scarab IV YL-WSC4



Dongche II SS-WDC2



Extra Space for controller



### Specifications: Choice of 7 different input plugs for AC chargers



American Type



Australian Type



British Type



European Type



Israel Type



Japanese Type



Switzerland Type

### Specifications: Choice of 7 different DC output plugs



001 (5.5 x 2.1 x 10mm)



002 (4-PIN)



003 (3-PIN)



005 (3-PIN)



006 (5-PIN)



011 (5.5 x 2.5 x 12mm)



017 (5.5 x 3.0 x 10mm)



#### 60W Chargers

Model	ACK2804N	ACK4201N	C060L0701	C060L1001
Battery Voltage	24V	36V	24V	36V
AC Input	100 - 240V			
Frequency	47 - 63Hz			
DC Output	29.4V	42.0V	29.4V	42.0V
Charging Current	Max. 1.5A	Max. 1.35A	Max. 1.5A	Max. 1.35A
Power	Max. 60W			
Dimensions	115 (L) x 58 (W) x 31 (H) mm			
Certifications	CE, UL, GS, SAA & RCM		CE, FCC	



#### 80W Chargers

Model	CF080L0702	CF080L1018	CF080L1020
Battery Voltage	24V	36V	36V
AC Input	100 - 240V		
Frequency	47 - 63Hz		
DC Output	29.4V	42.0V	42.0V
Charging Current	Max. 2A	Max. 2A	Max. 2A
Power	Max. 80W		
Dimensions	141.5 (L) x 60.5 (W) x 33.6 (H) mm		
Certifications	CE, FCC		CE, FCC, UL, SAA, PSE



#### 80W Charger

Model	CM080L1002 <b>NEW</b>
Battery Voltage	36V
AC Input	100 - 240V
Frequency	47 - 63Hz
DC Output	42.0V
Charging Current	Max. 2A
Power	Max. 84W
Dimensions	147.0 (L) x 65.5 (W) x 34.2 (H)mm
Certifications	CE, FCC, KC, GS, RCM, UL



#### 100W Chargers

Model	CP100L0702	CP100L1002	CP100L1302
Battery Voltage	24V	36V	48V
AC Input	100 - 240V		
Frequency	50 - 60Hz		
DC Output	29.4V	42.0V	54.6V
Charging Current	Max. 2.5A	Max. 2.5A	Max. 1.8A
Power	Max. 100W		
Dimensions	168.5 (L) x 64.8 (W) x 39.2 (H) mm		
Certifications	CE, FCC		



#### 160W Chargers

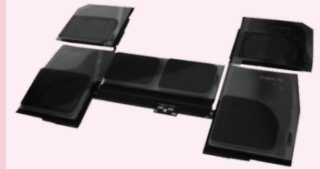
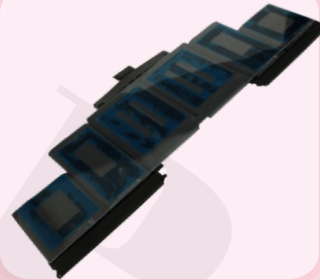
Model	CM160L1004 <b>NEW</b>	CM160L1303 <b>NEW</b>
Battery Voltage	36V	48V
AC Input	100 - 240V	
Frequency	47 - 63Hz	
DC Output	42.0V	54.6V
Charging Current	Max. 4A	Max. 3A
Power	Max. 168W	
Dimensions	179.0 (L) x 80.0 (W) x 37.0 (H)mm	
Certifications	CE, FCC, KC, RCM, GS	



#### 250W Charger

Model	CM250L1006 <b>NEW</b>
Battery Voltage	36V
AC Input	100 - 240V
Frequency	50 - 60Hz
DC Output	42.0V
Charging Current	Max. 6A
Power	Max. 250W
Dimensions	219.8 (L) x 105.8 (W) x 48.9 (H)mm
Certifications	CE, FCC

## DIVERSIFIED LAPTOP COMPUTER BATTERIES



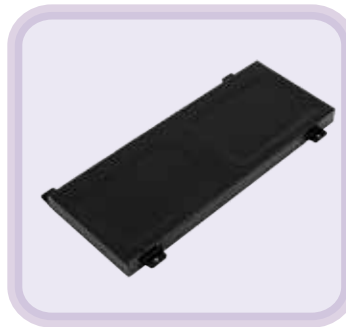
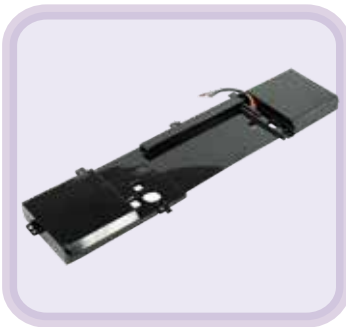
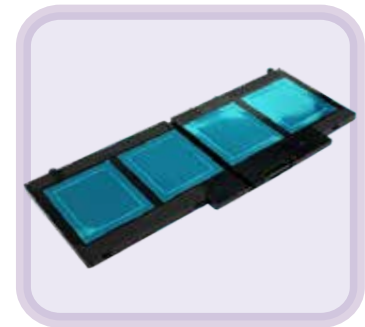
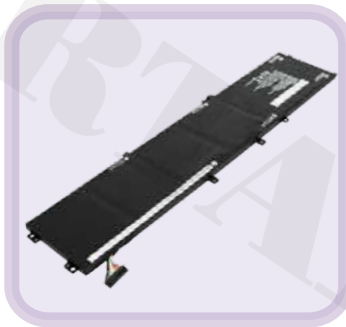
ASUS®



\*All brands, trademarks and registered trademarks are the property of their respective holders.

*We provide choices for a broad range of brands: Acer, Apple, Asus, Dell, LG, Compaq, Fujitsu, Gateway, Sony, Lenovo, Samsung, MSI, Panasonic, Toshiba, HP, and IBM, etc.*

28



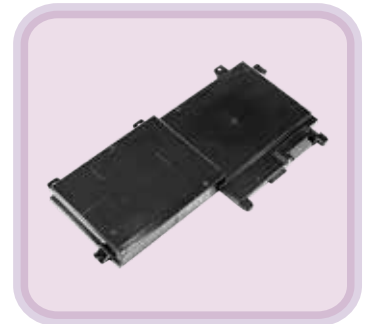
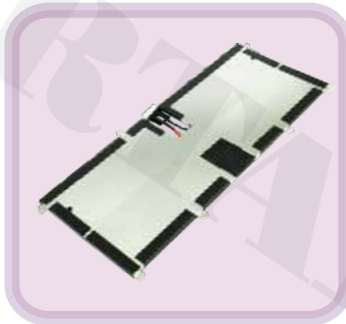
\*All brands, trademarks and registered trademarks are the property of their respective holders.

**lenovo**

\*All brands, trademarks and registered trademarks are the property of their respective holders.

*We provide choices for a broad range of brands: Acer, Apple, Asus, Dell, LG, Compaq, Fujitsu, Gateway, Sony, Lenovo, Samsung, MSI, Panasonic, Toshiba, HP, and IBM, etc.*

30



SAMSUNG



\*All brands, trademarks and registered trademarks are the property of their respective holders.

**FUJITSU****acer****TOSHIBA**

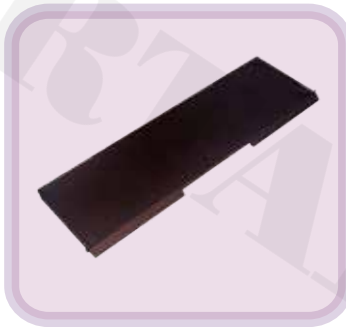
\*All brands, trademarks and registered trademarks are the property of their respective holders.



*We provide choices for a broad range of brands: Acer, Apple, Asus, Dell, LG, Compaq, Fujitsu, Gateway, Sony, Lenovo, Samsung, MSI, Panasonic, Toshiba, HP, and IBM, etc.*

32

**SONY**



**Panasonic**  
ideas for life



 **LG**



**DURACELL**



\*All brands, trademarks and registered trademarks are the property of their respective holders.

## UNIVERSAL LAPTOP AC & TYPE C ADAPTERS

### AC Adapter

We provide 38 kinds of Interchangeable connector tip for customers to choose with.  
 - Select a suitable connector tip and fit into the laptop DC-in jack tightly and steadily.  
 Then connect the DC output of the Power Adapters.



Tip for MacBook



**19V / 4.74A  
90W**



58.5 x 34.5 x 134mm

**16V / 4.06A  
65W**



95.4 x 42.3 x 30.4mm

**19V / 2.36A  
45W**



90.6 x 35.0 x 26mm

### Type C Adapter 60W USB-C PD3.0 Charger



American



European



Australian



British



**Input: 100 - 240V / Max 1.3A  
Output: 5 - 20V / Max.1.2A**

# DIGITAL CAMERA & VIDEO CAMCORDER BATTERY PACKS & CHARGERS

## BATTERY PACKS



Fit model: **SONY**  
Voltage: 3.8V  
Capacity: 2040, 2280mAh



Fit model: **Panasonic**  
Voltage: 7.4V  
Capacity: 3500mAh



Fit model: **Canon**  
Voltage: 7.4V  
Capacity: 750mAh



Fit model: **Nikon**  
Voltage: 3.7V  
Capacity: 980mAh



Fit model: **Fujifilm**  
Voltage: 7.2V  
Capacity: 850, 1100mAh



Fit model: **GoPro Fusion**  
Voltage: 3.8V  
Capacity: 2620mAh



Fit model: **Olympus**  
Voltage: 3.7V  
Capacity: 620mAh



Fit model: **Insta360**  
Voltage: 3.8V  
Capacity: 1200mAh



Fit model: **Samsung**  
Voltage: 3.7V  
Capacity: 1100mAh



Fit model: **Pentax**  
Voltage: 7.4V  
Capacity: 2050, 2200, 2300, 2600mAh



Fit model: **DJI**  
Voltage: 3.85V  
Capacity: 1300mAh

\*All brands, trademarks and registered trademarks are the property of their respective holders.

## CHARGERS



### AVET Series

*For 7.2~8.4V*

#### Specifications:

Input: DC 5V / 1A

Output: DC 8.4V / 1A

Dimension: 86 x 49 x 24mm

#### Package includes



Charger  
Base



Charger  
Plate



USB Power  
Cable

### USB Dual Charge

#### Specifications:

Input: DC 5V / 1-2A

Output: DC 4.2V / 8.4V 0.6A\*2

Dimension: 85 x 54 x 23mm



#### USB Charger For

Canon LP-E10, Fuji VP-W126, Nikon EN-EL15,  
Sony NP-FZ100, Sony NP-FW50, Sony NP-BX1

**Convenient Design**  
Automatic Positive (+) and Negative (-)  
Fit for different battery sizes



### AVEQ Series

*For 3.6~4.2V*

#### Specifications:

Input: DC 5V / 1A

Output: DC 4.2V / 1A

Dimension: 79 x 47 x 22mm

#### Features

- Slim & Portable Size
- Powered by USB port
- Interchangeable Charger Plates



\*All brands, trademarks and registered trademarks are the property of their respective holders.

## CHARGERS

36

### AVMP Series

#### Specifications:

Input:

100 - 240V; 50 / 60Hz

Output:

DC 12V / 1A

Charger DC Output:

DC 4.2V / 8.4V

Dimensions:

106 x 68 x 35mm



#### **Features**

- Interchangeable Charger Plates
- Charger come with 2 power adaptors, allow you to charge your battery at home or in car
- Select 1 of 4 optional AC power Adaptors



### ACMPB Series

#### Specifications:

Input:

100 - 240V; 50 / 60Hz

Output:

DC 4.2V / 8.4V

Dimensions:

80 x 48 x 28mm



#### **Features**

- Direct plug into the wall outlet
- Interchangeable Charger Plates
- Interchangeable Adaptor Plates, design for worldwide applications



\*All brands, trademarks and registered trademarks are the property of their respective holders.

## LED - FLASHLIGHT BATTERY PACKS & CHARGERS

Batteries are provided with reliable built-in safety Protection Circuit Modules (PCM) to protect against Over Charge, Over Discharge, Overload and Under Voltage

### BATTERY PACKS

#### New Special Design



**FLU181 750mAh**

Size: 69.8 x Ø18.6mm  
Built-in protection circuit

**Output: 2.2A**

**New Version:  
Continuous Discharge  
Current 8A**



**FL187 3400 mAh**

Size: 68 x Ø18.6 mm  
Built-in protection circuit



**Output: 1.5A**

**FLU141 750 mAh**

Size: 49.5 x Ø14.2 mm  
Built-in protection circuit



**FL197 3400 mAh**

Size: 70 x Ø18.6 mm  
Built-in protection circuit



**FL140 800 mAh**

Size: 52.2 x Ø14 mm  
Built-in protection circuit



**FL160 700 mAh**

Size: 35.5 x Ø16.5 mm  
Built-in protection circuit

### CHARGERS / ADAPTERS



#### ACMPB03

##### Specifications:

Input: 100 - 240V ~ 50 - 60Hz

Output: DC 4.2V / 8.4V 550~650mA

Dimensions: 80 x 50 x 31mm



AC Power Adapter



US



UK



EU



AUS

## EXTERNAL BATTERIES

### TRAVEL SERIES

Model EL1697 Max. 31500 mAh



4 Colors : Pink, Green, Blue & Gray

#### Specifications:

Model	EL1697
Input	DC12V-24V
Output	1 16V = 4A /
	19V = 3.5A /
	24V = 2.5A
	2 5V = 1A
	3 5V = 2.1A
	4 10.8V = 5A
Size	177 x 110 x 23 mm
Capacity	27000 mAh
Cell	Panasonic NCR18650GA x 9

#### Package Includes



Connectors for Laptop



Connectors for Mobile Phone



AC Adapter (19V / 45W)



Travel Bag

### PROFESSIONAL SERIES

Model EL1901 Max. 63000 mAh



Designed for Laptop

#### Specifications:

Model	EL1901
Rated Input	DC 12-19V
Selectable Output	DC 16V or 19V 4.75A Max.
USB Output	DC 5V / 2A
Size	270 x 145 x 33 mm
Capacity	63000 mAh
Cell	Panasonic NCR18650GA x 18

\*All brands, trademarks and registered trademarks are the property of their respective holders.

*Automation — Mechanization — Informatization — Intelligence*

YOUR ENERGY SOLUTION PROVIDER

**HONG KONG HEADQUARTER:**

**PORTAPOWER (China) Limited**

Flat 1003, 10/F., Hopeful Factory Centre,  
10-16 Wo Shing St., Fotan, N.T., Hong Kong

Tel: (852) 2687 6323

Fax: (852) 2687 6312

**GUANGDONG FACTORY:**

**Guangzhou Zhanhui Electronics Co., Ltd**

No. 320, Shinan Road, Guantan, Dongchong,  
Nansha District, Guangzhou, China, 511453

Tel: (86) 020-6680 4228

Fax: (86) 020-6680 4229

**HUNAN FACTORY:**

**Changde YikLik Energy Limited**

Anxiang County Industrial Area,  
Changde City, Hunan, China, 415600

Tel: (86) 0736-433 8338

Fax: (86) 0736-433 8333

**PRODUCTION AND SERVICE CENTRE:**

**Silver Centre GmbH**

Am Treptower Park 28-30 (Haus D2),  
12435 Berlin, Germany

Tel: +49 030 60985356